

WallArt®

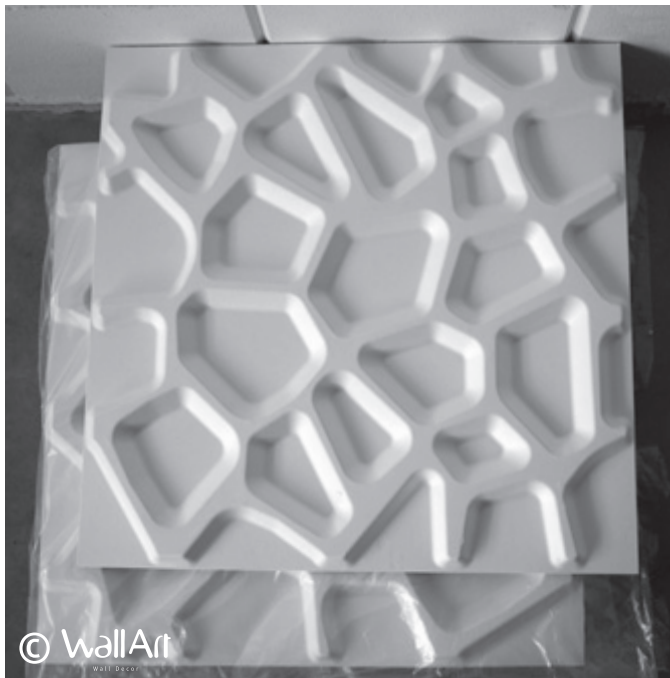
Wall Decor

installation manual

© WallArt

m y w a l l a r t . c o m

Step 1



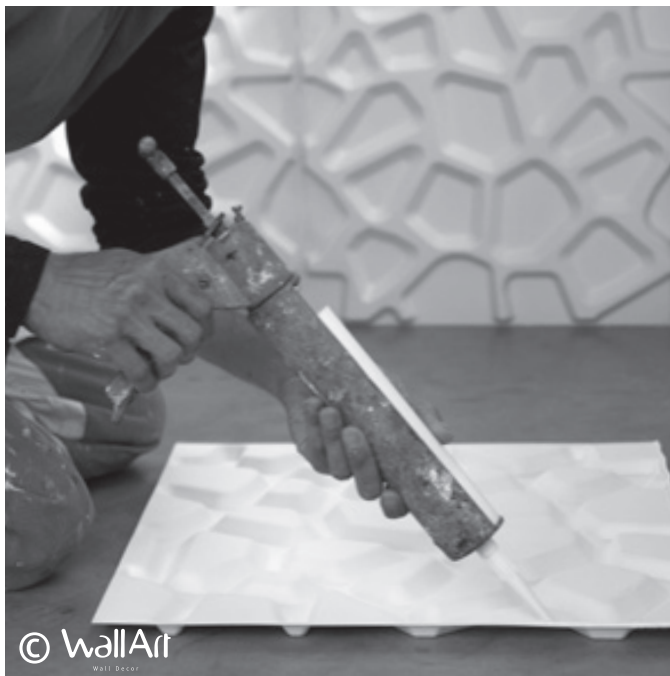
Acclimate panels for 48 hours in the environment and temperature they will be installed in.

Step 2



Install over relatively smooth flat surfaces, all major holes or major damage must be repaired. Surface must be clean, dry and free of loose debris.

Step 3



Apply adhesive to all sides of the back of the panel.

Step 4



Also apply adhesive to all other flat spaces of the back of the panel.

Step 5



Put equal pressure to the panel when installing them.

Step 6



Put pressure to all corners of the panel also during installation.

Step 7



Allign with other panels installed and check using a level to confirm during installation.

Step 8



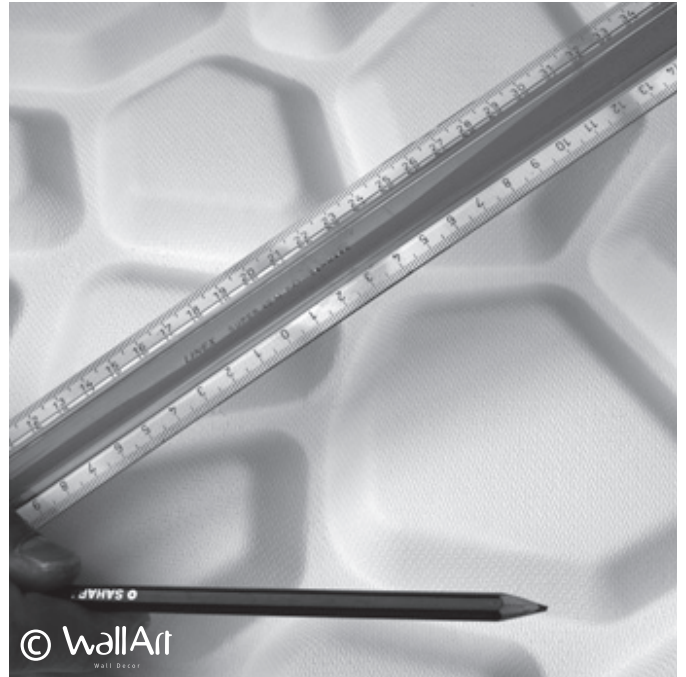
How to install on a less than panel size area?

Step 9



Measure the total size of the space.

Step 10



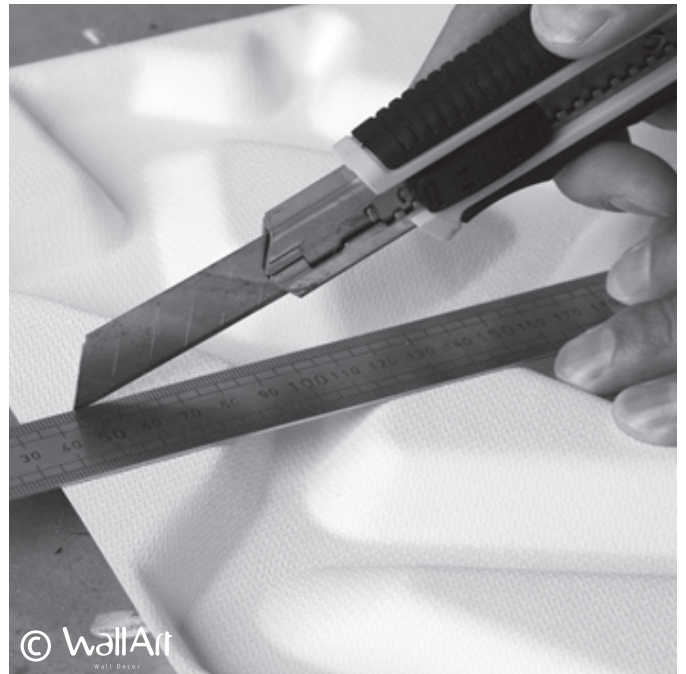
Mark the total size on the panel with a pencil.

Step 11



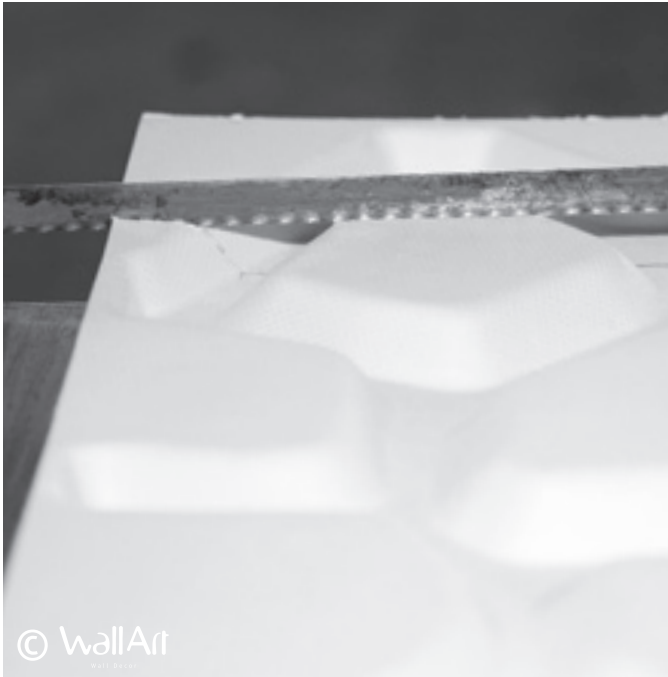
Cut the panel by using a utility knife.

Step 12



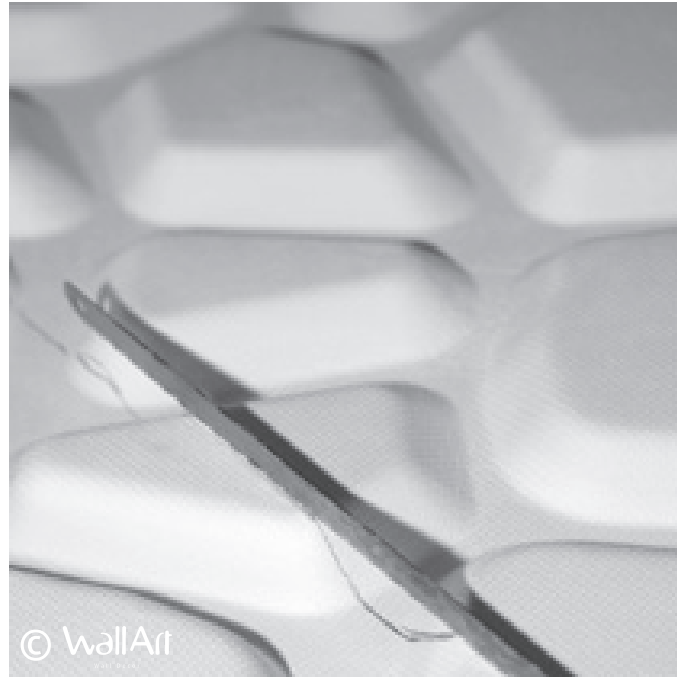
Repeat initial cut by cutting deeper into the panel.

Step 13



Cutting with a Jig Saw (shown here is a Jig Saw blade only).

Step 14



Follow pencil line on the back of the panel showing where to cut.

Step 15



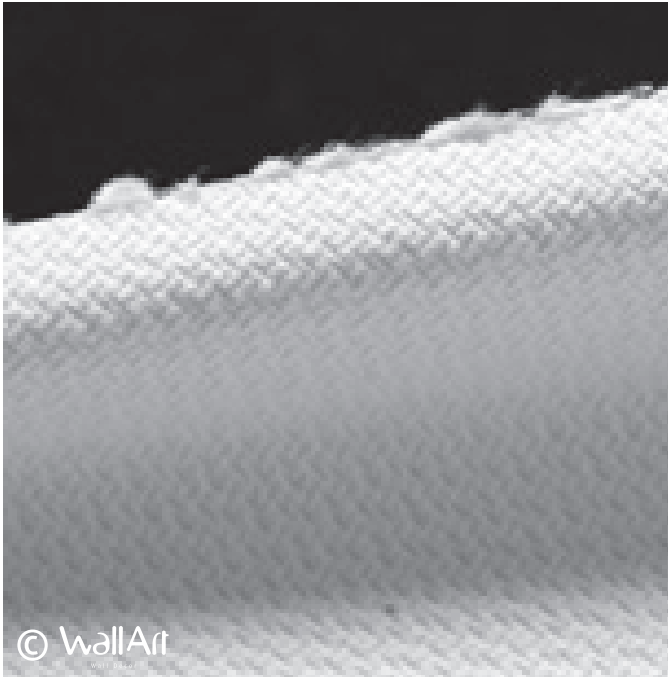
Cutting in a straight line following the pencil line marking on the back.

Step 16



Cutting by hand with a Jig Saw blade on a work bench.

Step 17



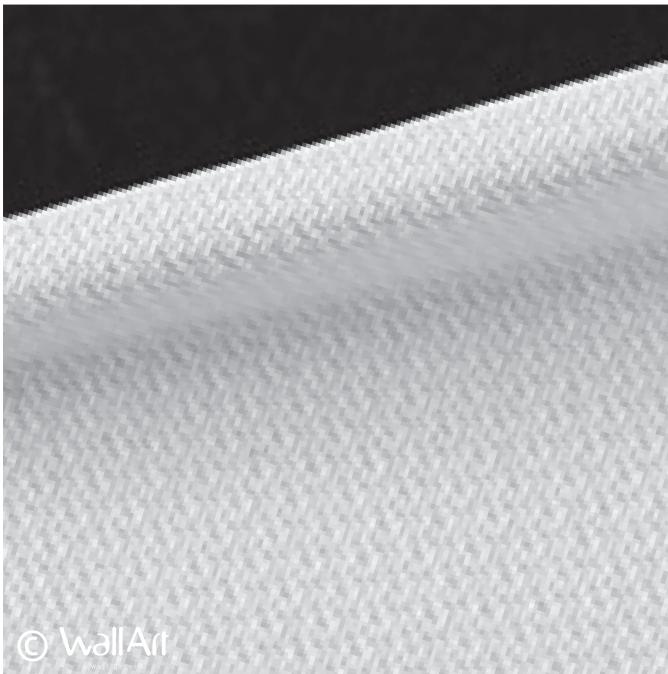
Panel after cutting but before sanding.

Step 18



Sand the cut edge to a smooth finish.

Step 19



Edge of panel after cutting and sanding.

Step 20



Install the cut to size panel on the leftover space.

Step 21



Prepare for cleaning joints from any seep through adhesive.

Step 22



Clean joints from any seep through adhesive with a brush.

Step 23



Clean the surface of the installed panels.

Step 24



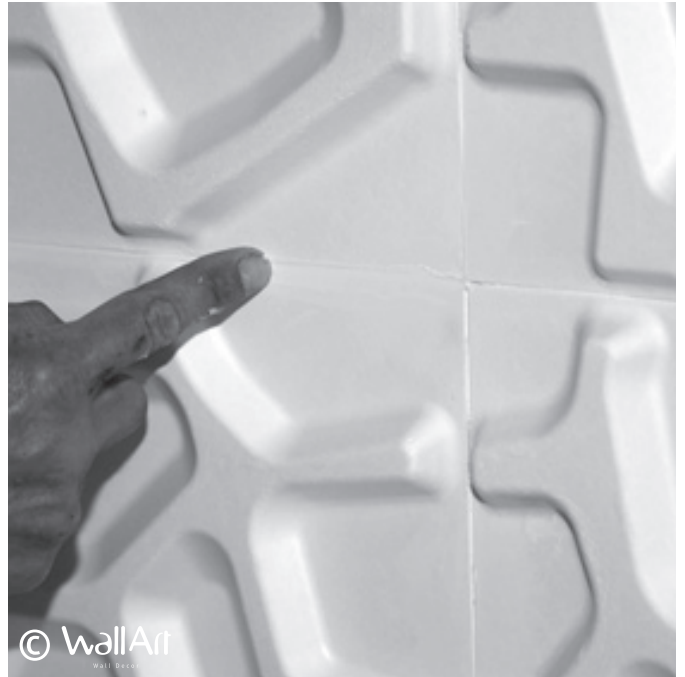
Fill joint seams with paintable joint compound or paintable caulking.

Step 25



Clean the joints with a wet brush.

Step 26



Smoothen the joints using your finger.

Step 27



Clean the surface with slightly damp rag.

Step 28



Installed panels now ready for priming or painting.

Step 29



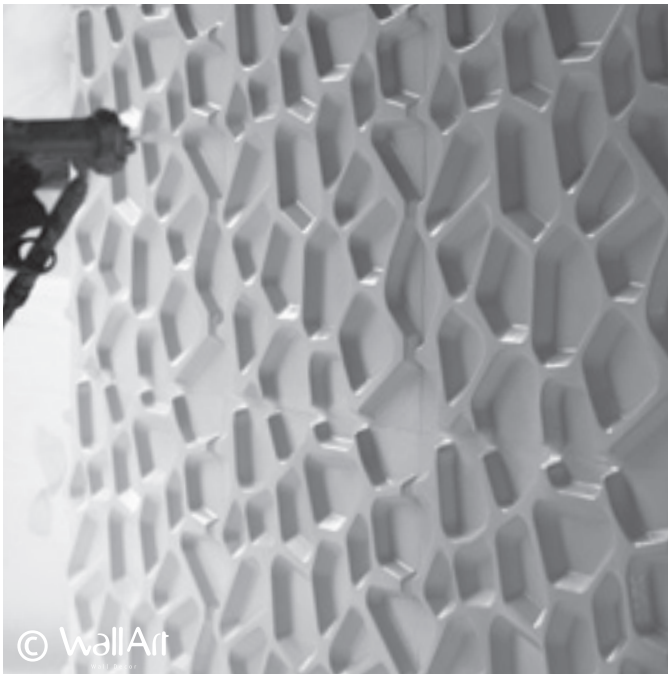
Apply primer to installed panels (Spray, Brush or Roll).

Step 30



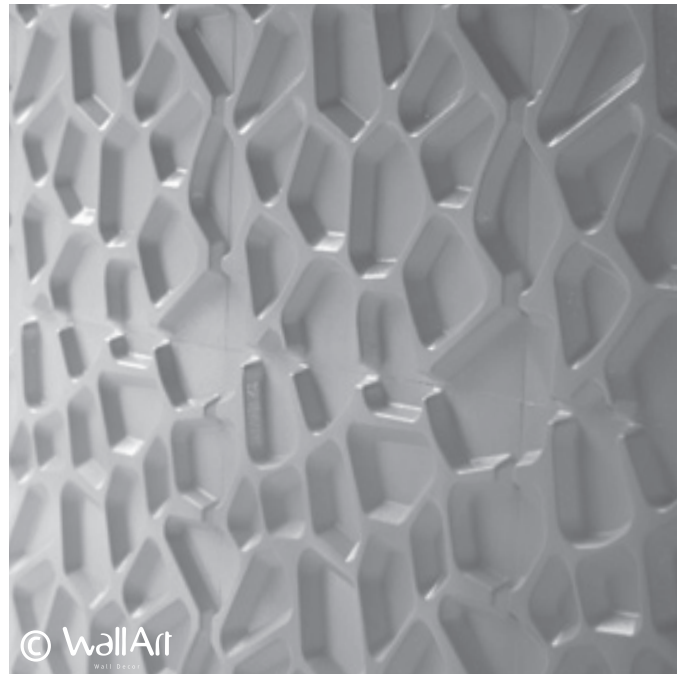
Let primer dry before painting.

Step 31



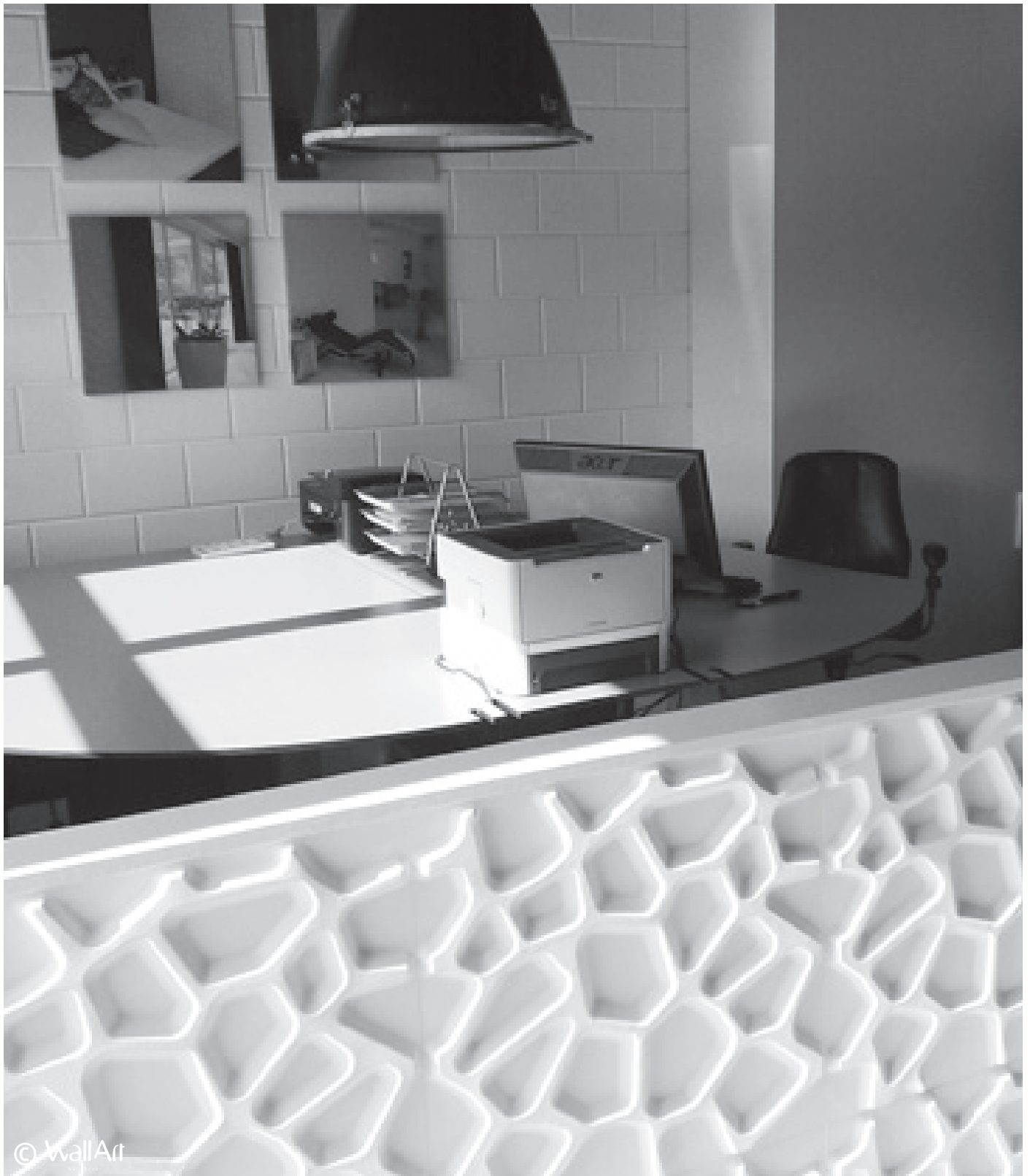
Paint the installed wall (Spray, Brush or Roll).

Step 32



Completed installation.

Step 33



The finished result after installation using the “Gaps” 3D wall panels for an office project.

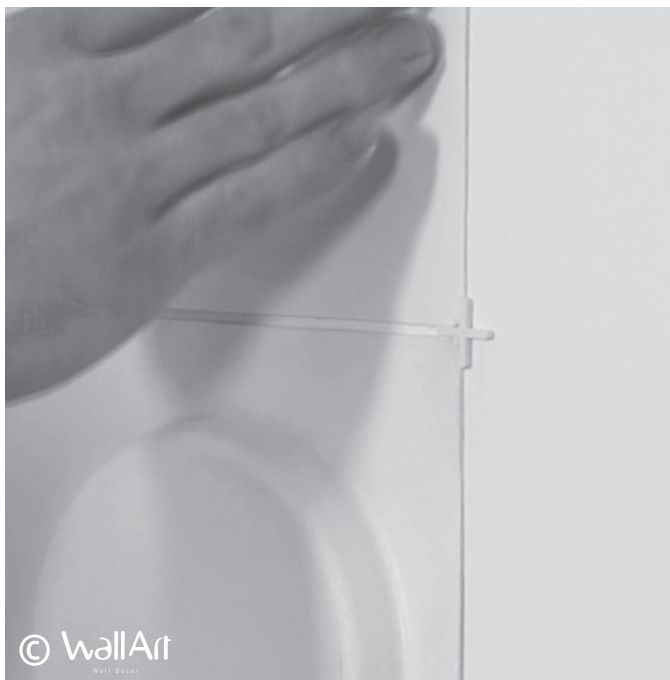
wallArt[®]

Wall Decor

Installation
with Joint
seams

© wallArt
Wall Decor

m y w a l l a r t . c o m



Install Wall Panel using Tile Spacers
(different size available)



Using Tile Spacers gives best result



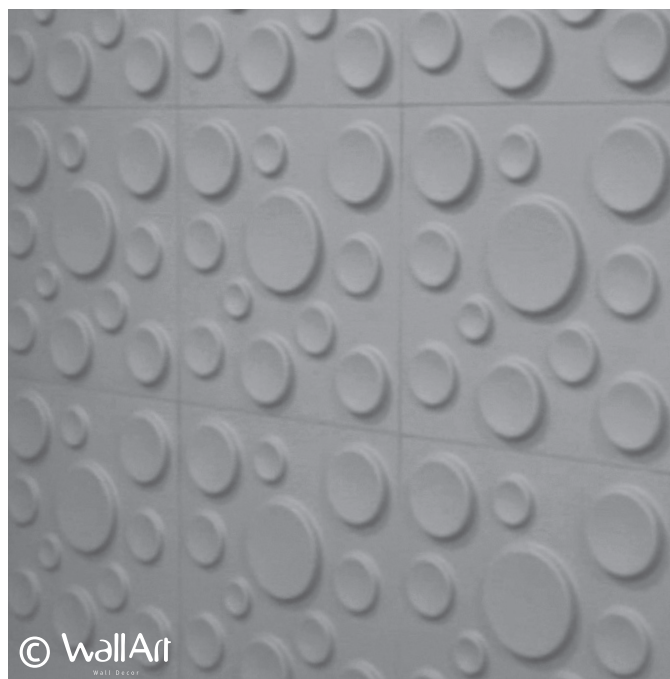
Paint without filling the Joints



Paint Joints also



Second layer of paint



Result of Wall Panel installation without filling the Joint seams

This method is advised for humid area where cracks keep appearing when filling joint seams with joint compound or other filler.

This method is advised when cracks appear for reasons mentioned below :

1. When the process of drying is sometimes accelerated this can lead to cracks caused by too rapid evaporation of water.
2. When panels are painted without priming, depending on their moisture. Fast evaporating water can lead cracks.
3. Cracks can be formed as a result of micro thermo - expansion of building materials as walls and panels also.
4. Cracks can be formed as a result of rapid evaporation of binding material as caulking or putties.